

Enterprise

A framework for enterprise modelling & integration

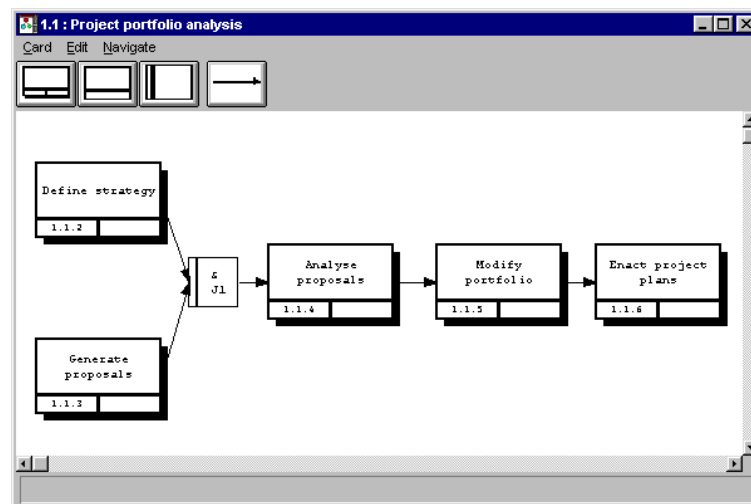
Description:

- ◆ Major UK initiative to promote use of knowledge based systems in enterprise modelling.
- ◆ Enterprise Toolset developed to support
 - ◆ Capturing aspects of a business;
 - ◆ Planning of user tasks based on procedures;
 - ◆ Execution of process models;
 - ◆ Integration of off-the-shelf tools;
 - ◆ Standardised representation & communication.

Technical Capability (Entity) >Analysis (Device) •Requirements Analysis •Hazard Analysis •Quality Analysis •Testability Analysis >Testing >Review >Assessment >Modelling >Engineering >Design >Integration >Maintenance >Use IT-Capability >Database Capability (Data) •Storage •Structured Storage •Hierarchical Storage •Relational Storage •Unstructured Storage •Retrieval •Search •Calculation •Simulation	Cognitive Capability >Understanding >Reasoning >Creativity >Knowledge >Authoring (Document) >Management (Device) >Development (Device) Physical Capability (Entity) >Manual Capability •Repair •Removal •Fitting •Connecting •Replacement >Sensory Capability >Project Capability (Project) •Management >Planning >Organising >Controlling >Communication (Entity) •Request •Respond •Inform >Co-operation (Entity)	Business Capability (Entity) >Marketing •Customer Liaison >Commercial •Contracts •Bidding •Commissioning •Procurement >Personnel >Financial
--	--	---

Further work:

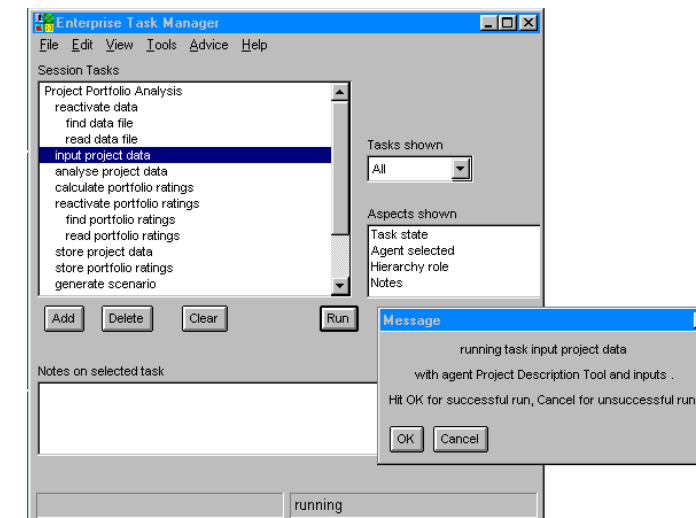
- ◆ Lloyds Register uses the Enterprise toolset for more effective modelling and re-engineering of business processes for strategic planning.
- ◆ Unilever used the toolset within its R&D activities.
- ◆ IBM UK used the Enterprise ontology in modelling its own internal organisation.
- ◆ The conceptual approach was carried forward into the Task-Based Process Management research project.



The Enterprise Procedure Builder

Results:

- ◆ Procedure Builder for capturing process models.
- ◆ Task Manager for integration, visualisation, and support for process enactment.
- ◆ Agent Toolkit to support development of agents in an agent-based architecture to support integration of COTS tools.
- ◆ Enterprise Ontology for standardised representation & communication.
- ◆ Bid Manager demonstrator developed jointly with Pilkington Optronics.



The Enterprise Task Manager