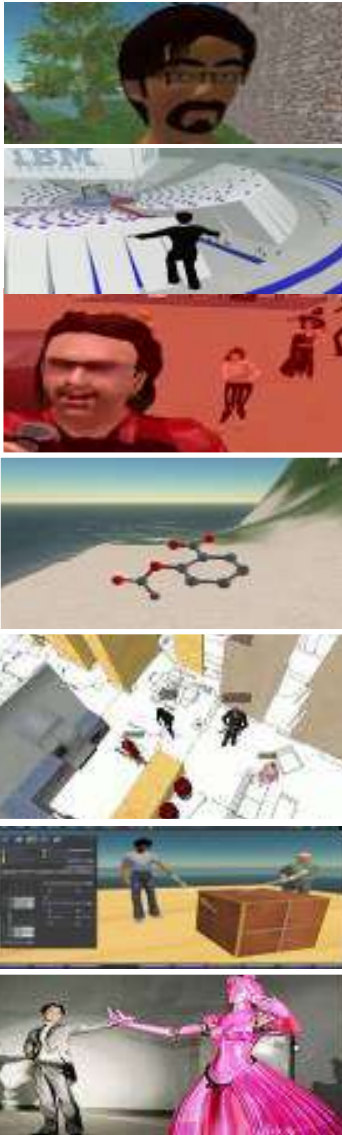




## Virtual Collaboration for Lotus Sametime *Overview presentation*

**Technical consulting | Training and certification | Premium Support services**

## Immersive experiences bring to users



**The Sense of Self**

**The Death of Distance**

**The Power of Presence**

**The Sense of Space**

**The Capability to Co-create**

**The Pervasiveness of Practice**

**The Enrichment of Experience**

## How do virtual worlds work -- in 20 seconds or less?

**Avatar** - an avatar is a representative of you in a virtual world.

Avatars can **meet and interact** with other avatars in a 3D environment





# Business value of virtual world platforms



Greater leverage of key experts across an organization

**Increased Efficiency**

**Improved Access**

**Enhanced Learning and Collaboration**

**Decreased Cost**



Realtime collaboration on tasks



Faster response to organization and client issues

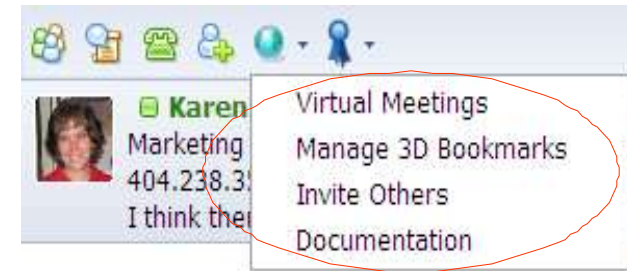


Enables connection of globally dispersed teams

# Sametime 3D- A new way to collaborate

## Business Value:

Supports enhanced collaboration activities using virtual worlds, integrated with Lotus Sametime 8.01(or later)



## Business Venues:

- Boardroom
- Collaboration space
- Theater



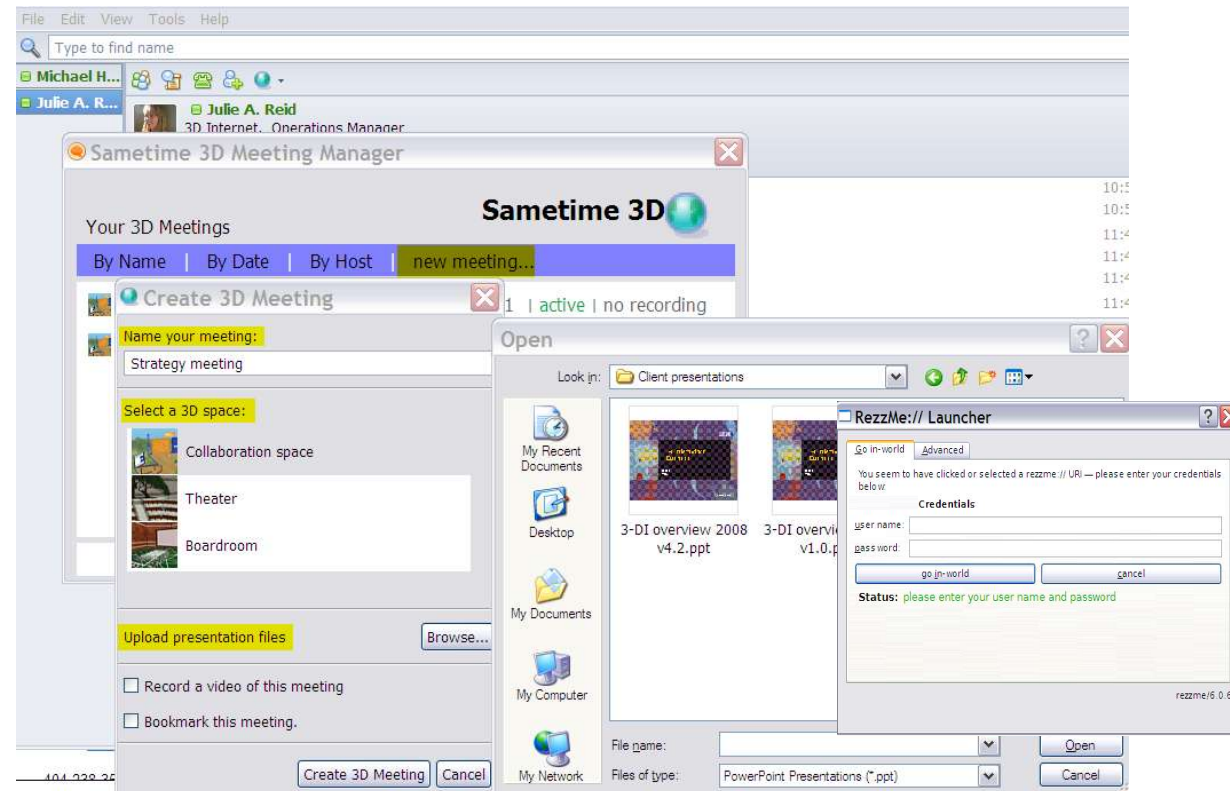
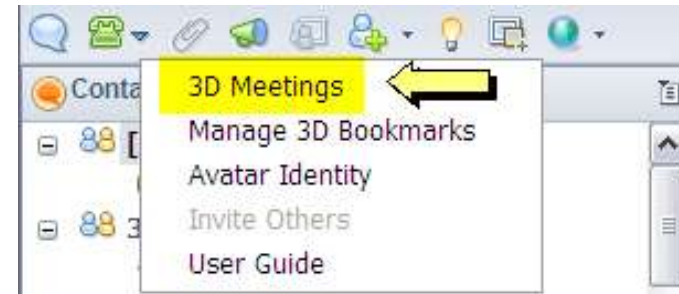
## Platform features:

- Reusable meeting spaces
- In-world tools to support virtual meeting activities
- Optional spatial voiceAccess control, integration with Domino User directory or Enterprise LDAP
- Web Portal with User and Administrator roles



## Meetings are created and accessed using the SameTime plug-in or a web user interface

- Select participants via group chat and select 3D meetings
- Choose existing meeting or from meeting space templates (Boardroom, Collaboration area, Theater)
- Send invitation
- User authentication (against LDAP) to confirm identity prior to entering virtual meeting



<http://www.youtube.com/watch?v=SfqGwKFStuw>

Take the video tour...

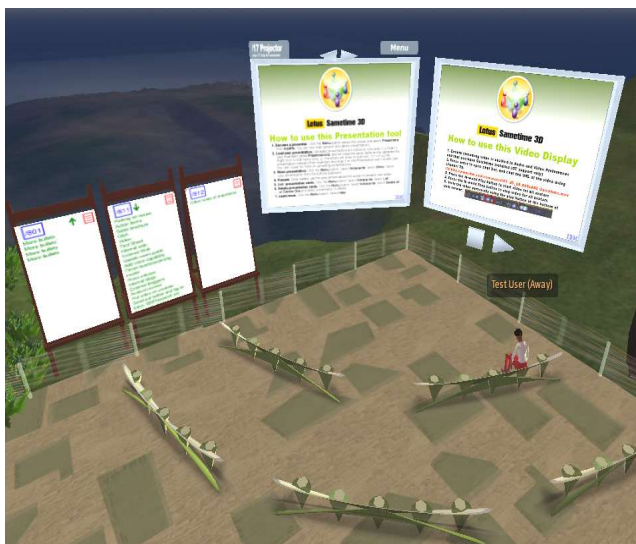
## Virtual Collaboration for Lotus Sametime video tour (youtube)





# In world components (flip chart, presentation and video viewer available in all three venues)

Presentation/video/flip charts



Brainstorming area



Action items



Planning wall



Interactive polling



Image viewer



## Meeting room management (web user interface)

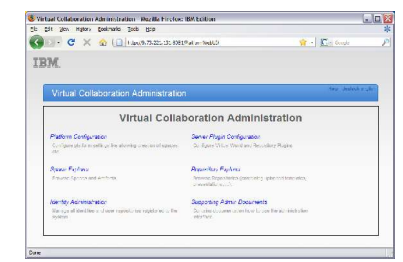
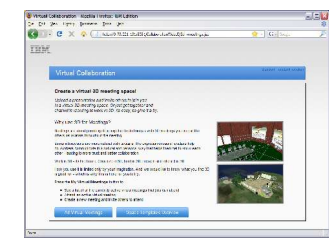
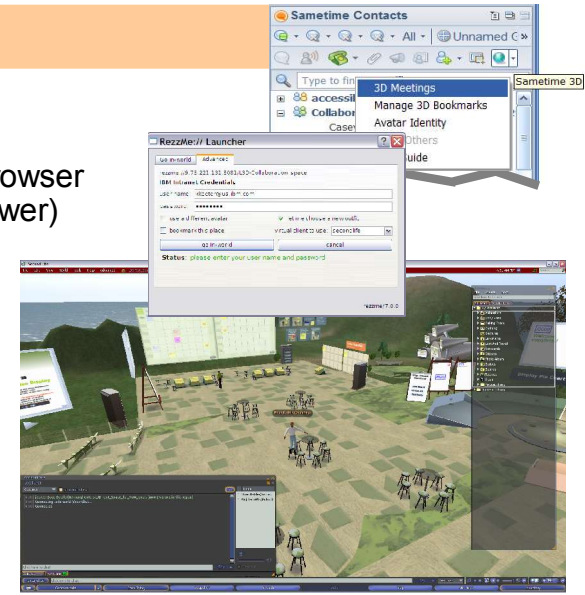
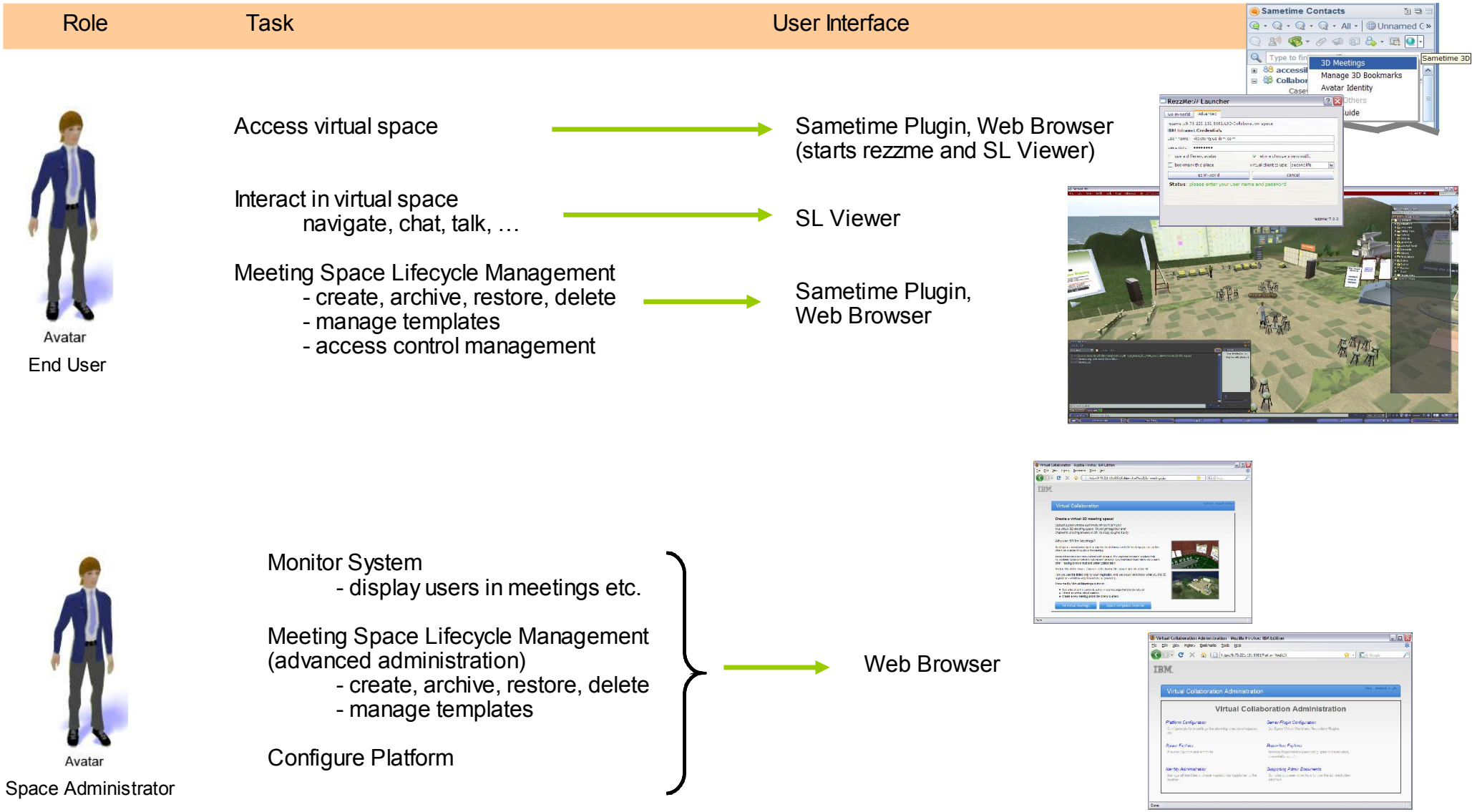
- Add/remove rooms
- Make rooms public/private and invite selected participants to private meetings
- Archive space (with contents) and restart later
- Add new templates, or save existing rooms (with contents) as templates for future enterprise use
- Upload presentations
- Manage multiple servers (administrator only)

The screenshot shows the 'Virtual Collaboration' web interface. At the top, there's a blue header with 'Virtual Collaboration' and 'Support deutsch english'. Below the header, the breadcrumb is 'Virtual Collaboration >> All Virtual Meetings'. The main content area is titled 'Virtual Meeting Information' and contains a 'Virtual Meeting Statistic' section with two input fields: 'number of available spaces' (value: 18) and 'number of active meetings' (value: 5). To the right of these fields is a text instruction: 'To create a 3D meeting room click the button below - it will create a page where you can invite others and manage this 3D space.' Below this is a green button labeled 'Add new Virtual Meeting'. Underneath is the 'Active Meeting Information' section with an 'Active Meeting Overview' section. At the bottom of this section are two blue buttons: 'Delete Virtual Meeting' and 'Archive Virtual Meeting'.

This screenshot shows the 'Virtual Meeting Information' page. The breadcrumb is 'Virtual Collaboration >> All Virtual Meetings >> Virtual Meeting Information'. The page is divided into several sections:
 

- Virtual Meeting Information:** Includes fields for 'virtual meeting name' (value: Daily Meeting 06.08), 'locator link' (value: rezme://9.73.221.131:8081/146-Daily\_Meeting\_06.08), and a 'Go into 3D Space now!' button.
- Participants:** Features an 'Invite:' text box, an 'Add' button, and an 'Invited:' list with the email 'jareid@us.ibm.com' and a 'Remove' button.
- Resources:** Shows a file named 'Sametime3D Survey.ppt'.
- Manage Virtual Meeting:** Contains several instructions and buttons:
  - 'Upload new Presentation' button with the text: 'Upload another presentation to be loaded into your inventory in the 3D world.'
  - 'Make private' button with the text: 'The meeting space is currently a public meeting.'
  - 'Archive Virtual Meeting' button with the text: 'The meeting space can be saved as an archive file that can be used to recreate it as it was.'
  - 'Save as Template' button with the text: 'The meeting space can be saved as a meeting template that can be used to create new virtual meeting based on it.'
  - 'Delete Virtual Meeting' button with the text: 'Clicking the button below will stop running the 3D space. If it has not been saved as an archive, everything in the space will be permanently lost.'

# Virtual Collaboration for Lotus Sametime User On-Ramps and Interfaces



## How do clients use it?

- **HR:** Remote employee meetings, mentoring sessions, training and education
- **Strategy orgs:** strategic planning activities, process re-engineering discussions
- **Development teams:** requirements prioritization discussion, project/development reviews
- **Sales & Marketing:** Project Room/“War room” for client projects, proposal development, announcement planning
- **Support:** “Crit sit” issue resolution communications space
- **Project office function:** Project managers who need to manage plan/projects for disperse teams
- **IT departments:** Support internal clients needs for collaboration, strategic planning, project office needs that can be supported with Sametime 3D, as well as for internal development
- **Consulting firms:** visioning/strategy workshops, facilitated sessions for clients

***Any group that requires team-based content development and discussion can benefit from this capability***

## “Pilot offering” solution package

One pack of rooms	<ul style="list-style-type: none"> <li>•One pack allows client to have up to four rooms running concurrently.</li> </ul>
Install Planning	<ul style="list-style-type: none"> <li>•Meet with the customer over the phone for installation planning - including software and hardware requirements and required skill sets from customer</li> </ul>
Install and configuration of ST 3D	<ul style="list-style-type: none"> <li>•Install and configure Virtual Collaboration for Lotus Sametime (4 rooms total)</li> <li>•LDAP integration (Domino LDAP)</li> </ul>
Project Management	<ul style="list-style-type: none"> <li>•Management of all ST 3D deliverables</li> </ul>
Orientation Sessions	<ul style="list-style-type: none"> <li>•Train the Trainer user orientation and collaboration session</li> </ul>
Post Install Support	<ul style="list-style-type: none"> <li>•8 hours of phone support for 30 days post install.</li> </ul>

Client responsible for pre-requisite software installation. Hardware cost and voice option not included. Recommended hardware configuration will be provided. Other options (voice, larger configurations, other LDAP etc) available on request

# Background charts

## Boardroom venue





# Theater/Auditorium venue





# Collaboration venue







## Collaboration – Presentation Area

- Easy loading of presentations through Sametime plug-in
- Menus to manager control of presenters and presentations
- Virtual “flip charts” for note taking during meetings
- Easy viewing via camera controls in seating
- Presentation and streaming video (Quicktime) viewing
- Export contents from flip charts for use in word processor or spreadsheet
- Optional space voice available for all venues



## Collaboration – Brainstorming wall

- Multiple boards for posting ideas, processes, requirement, strategy elements, project proposal materials etc
- Create, revise and vote on each card's content- multiple voting configurations
- Export and import options in spreadsheet compatible format
- Easy viewing via camera controls in seating
- Virtual “flip charts”
- Presentation viewer



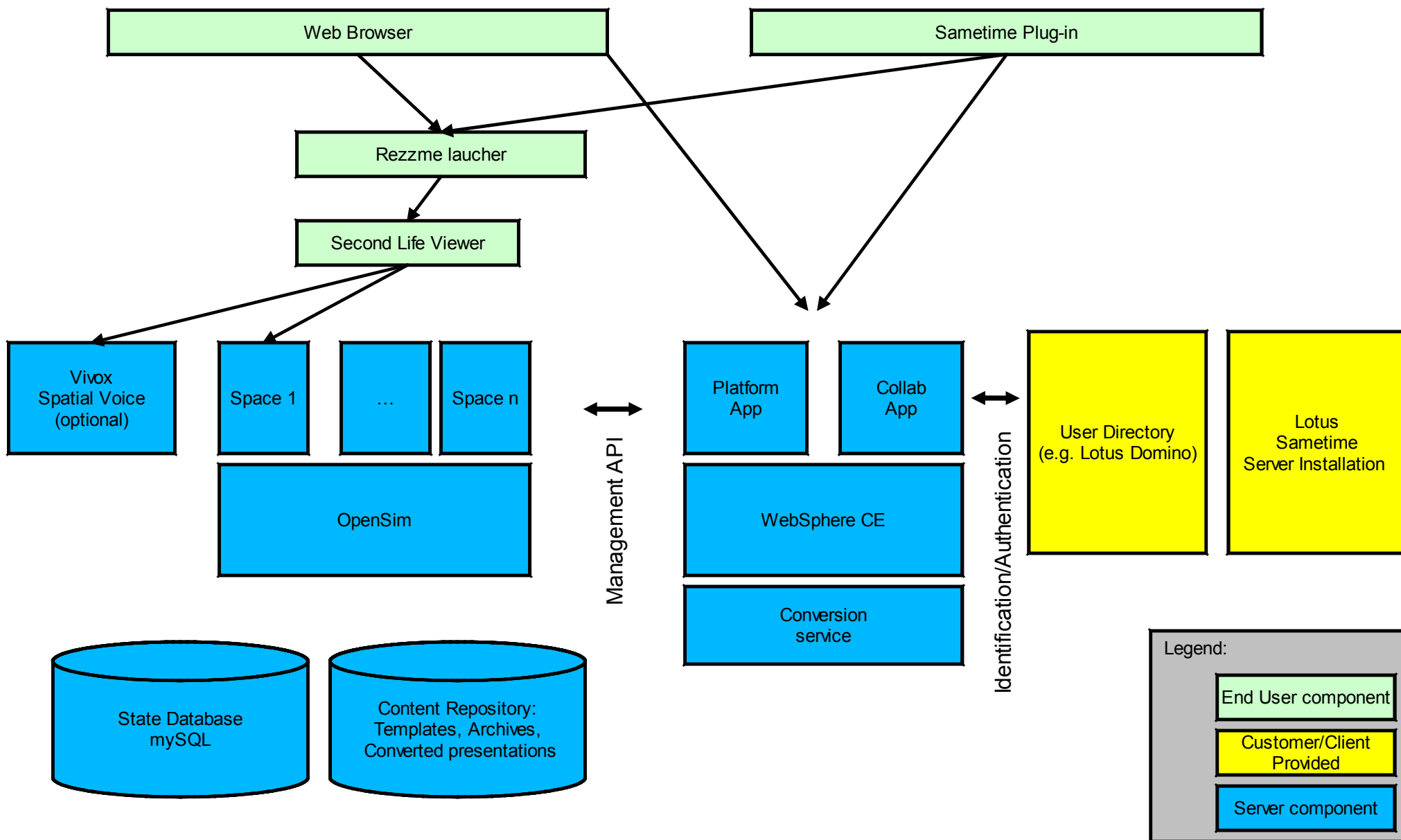
## Collaboration – Action and planning walls

- Action items, parking lot issues or other to-dos can be captured on Action wall
- Export of action items available
- Additional walls can be added (total three)



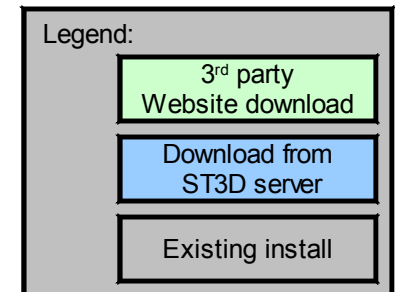
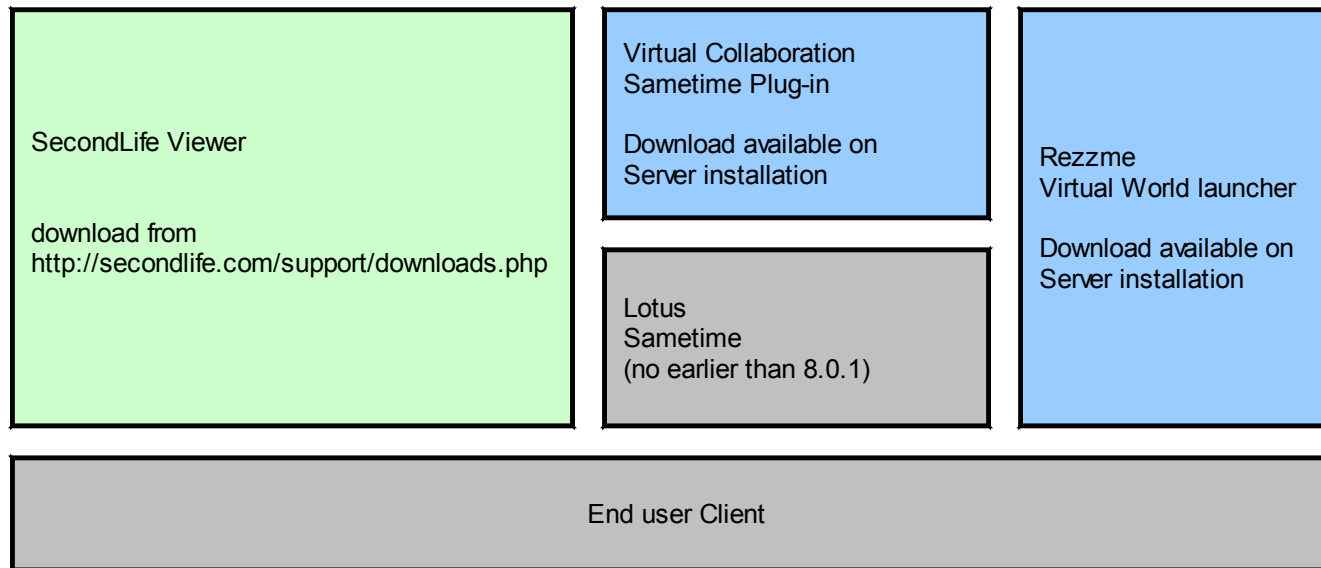
- Planning wall supports monthly view of key milestones, targets or other team communications
- Additional boards for each month can be added, and calendar can be extended (add new month)
- Export of planning wall supported

# Virtual Collaboration for Lotus Sametime Understanding the Components and Interaction



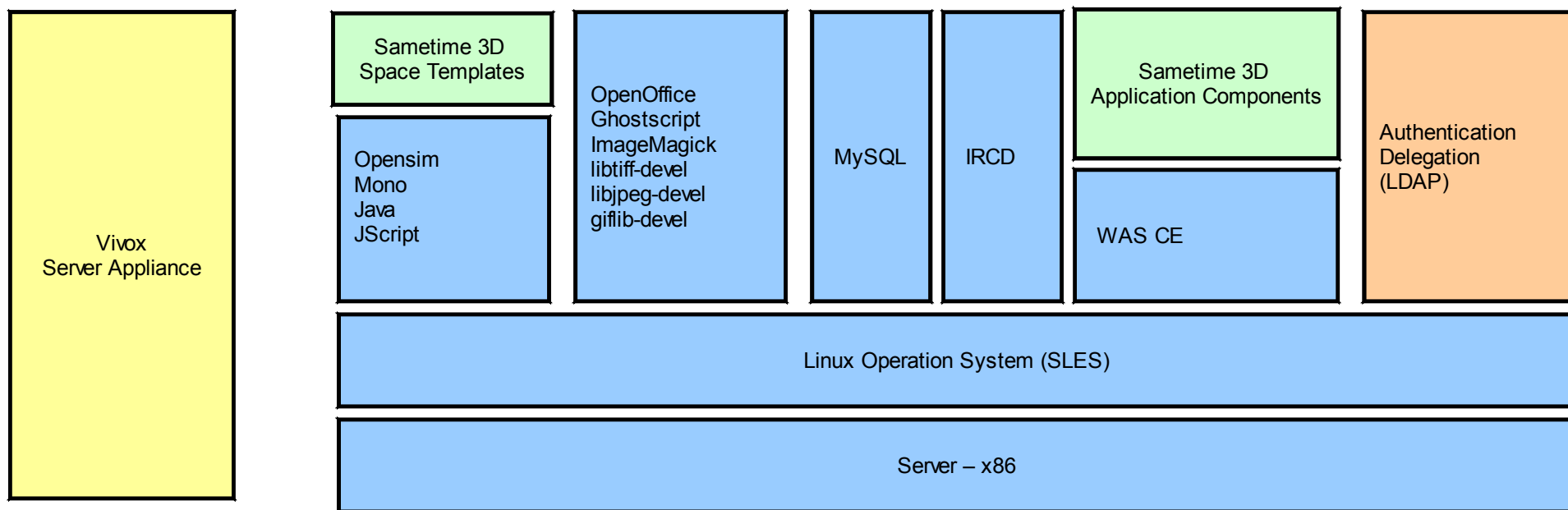
# Virtual Collaboration for Lotus Sametime

## Understanding the Client Component Installation



# Virtual Collaboration for Lotus Sametime

## Understanding the Server Component Deployment



### Legend:

IBM Developed  
For Sametime 3D

IBM Business  
Partner

Customization  
component

Base system

## Collaboration – Interactive polling and image viewer

- Customize question and up to five responses
- Participants move to colored section and results are presented in real time
- Vote results can be shown in bar (shown) or pie chart format
- Presentation viewer available
- Question/results and virtual flip chart contents can be exported



- Images loaded into inventory can be displayed on small and large screens