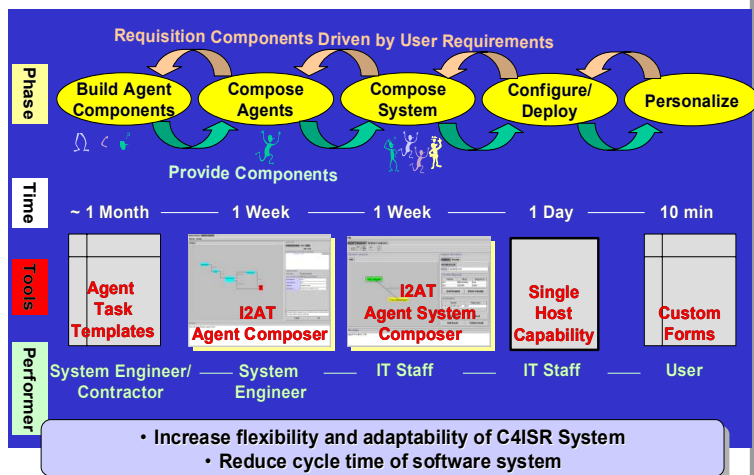


I2AT - Intelligent Interoperable Agent Toolkit

Lockheed Martin Advanced Technology Laboratories
<http://www.atl.lmco.com>

Agent-Oriented System Development

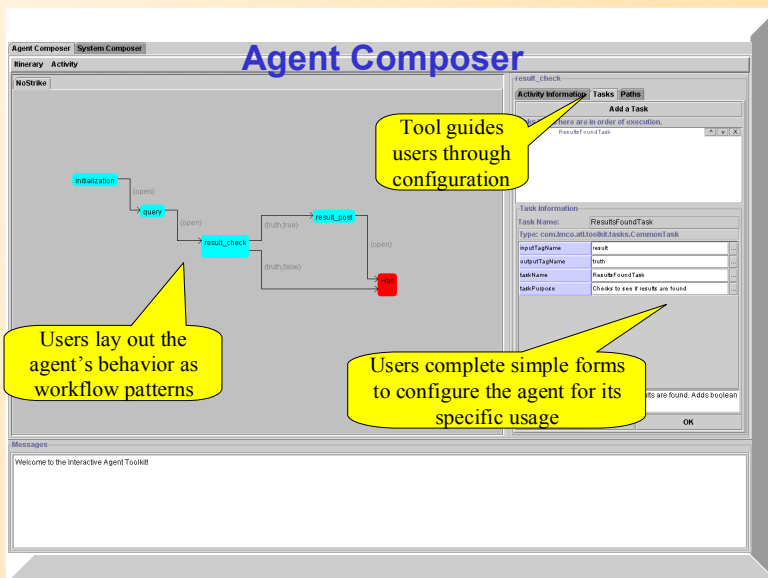


Vision:

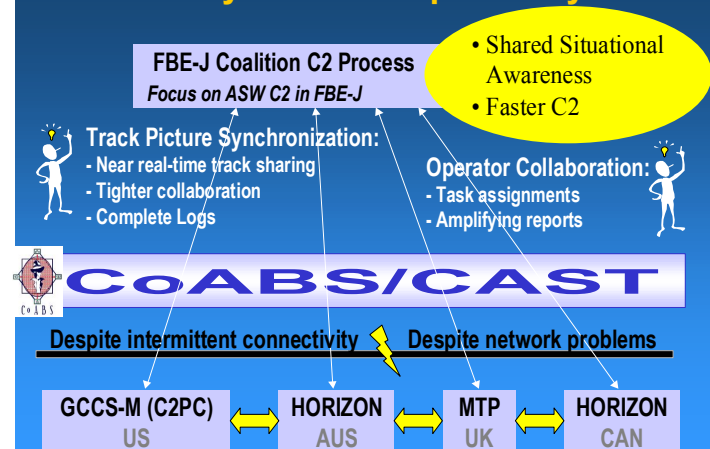
- ◆ Cycle time for insertion of new capabilities and/or tailoring of systems is too slow.
- ◆ Invent a new system of systems life-cycle model based on agent-based
 - ◆ workflow automation
 - ◆ large-scale interoperability
 - ◆ rapid deployment
 - ◆ decision support
- ◆ Create tools that support the full spectrum from end users to developers

Capability:

- ◆ An agent-oriented system development paradigm that works "middle-out," starting with systems specification
- ◆ Agent System Composer orchestrates agent-agent and agent-C2 system interoperation
- ◆ Agent Composer graphical specification of agent workflow patterns
- ◆ Repository of reusable, configurable agent behavior components



FBE-J C2 System Interoperability



Demonstrated Impact:

- ◆ After four hours of familiarization, NUWC and SPAWAR developers effectively built agent systems.
- ◆ Two days reduced to two hours for typical agent workflow development
- ◆ Greater than 50% reuse of agent components within a typical agent system
- ◆ Simplified, remote agent system deployment to distributed sites

