

Enterprise

A framework for enterprise modelling & integration



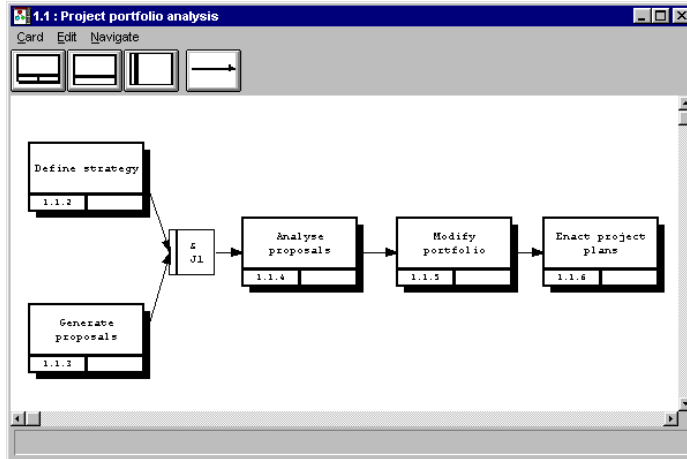
Description:

- ◆ Major UK initiative to promote use of knowledge based systems in enterprise modelling.
- ◆ Enterprise Toolset developed to support
 - ◆ Capturing aspects of a business;
 - ◆ Planning of user tasks based on procedures;
 - ◆ Execution of process models;
 - ◆ Integration of off-the-shelf tools;
 - ◆ Standardised representation & communication.

Technical Capability (Entity) <ul style="list-style-type: none"> >Analysis (Device) <ul style="list-style-type: none"> •Requirements Analysis •Hazard Analysis •Quality Analysis •Testability Analysis >Testing >Review >Assessment >Modelling >Engineering >Design >Integration >Maintenance >Use IT-Capability <ul style="list-style-type: none"> >Database Capability (Data) <ul style="list-style-type: none"> •Storage •Structured Storage •Hierarchical Storage •Relational Storage •Unstructured Storage •Retrieval •Search •Calculation •Simulation 	Cognitive Capability <ul style="list-style-type: none"> >Understanding >Reasoning >Creativity >Knowledge >Authoring (Document) >Management (Device) >Development (Device) Physical Capability (Entity) <ul style="list-style-type: none"> >Manual Capability <ul style="list-style-type: none"> •Repair •Removal •Fitting •Connecting •Replacement >Sensory Capability >Project Capability (Project) <ul style="list-style-type: none"> •Management <ul style="list-style-type: none"> >Planning >Organising >Controlling >Communication (Entity) <ul style="list-style-type: none"> •Request •Respond •Inform >Co-operation (Entity) 	Business Capability (Entity) <ul style="list-style-type: none"> >Marketing <ul style="list-style-type: none"> •Customer Liaison >Commercial <ul style="list-style-type: none"> •Contracts •Bidding •Commissioning •Procurement >Personnel >Financial
--	--	--

Further work:

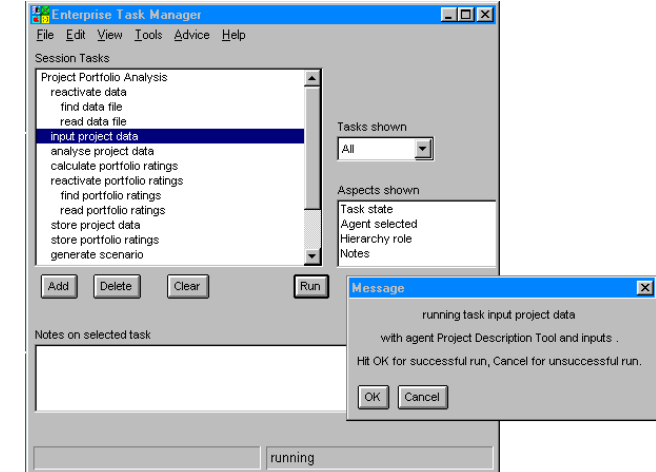
- ◆ Lloyds Register uses the Enterprise toolset for more effective modelling and re-engineering of business processes for strategic planning.
- ◆ Unilever used the toolset within its R&D activities.
- ◆ IBM UK used the Enterprise ontology in modelling its own internal organisation.
- ◆ The conceptual approach was carried forward into the Task-Based Process Management research project.



The Enterprise Procedure Builder

Results:

- ◆ Procedure Builder for capturing process models.
- ◆ Task Manager for integration, visualisation, and support for process enactment.
- ◆ Agent Toolkit to support development of agents in an agent-based architecture to support integration of COTS tools.
- ◆ Enterprise Ontology for standardised representation & communication.
- ◆ Bid Manager demonstrator developed jointly with Pilkington Optronics.



The Enterprise Task Manager



AIAI, Logica, IBM UK, Lloyds Register and Unilever
 Funded by the DTI Intelligent Systems Integration Programme
<http://www.aiai.ed.ac.uk/project/enterprise/>

