

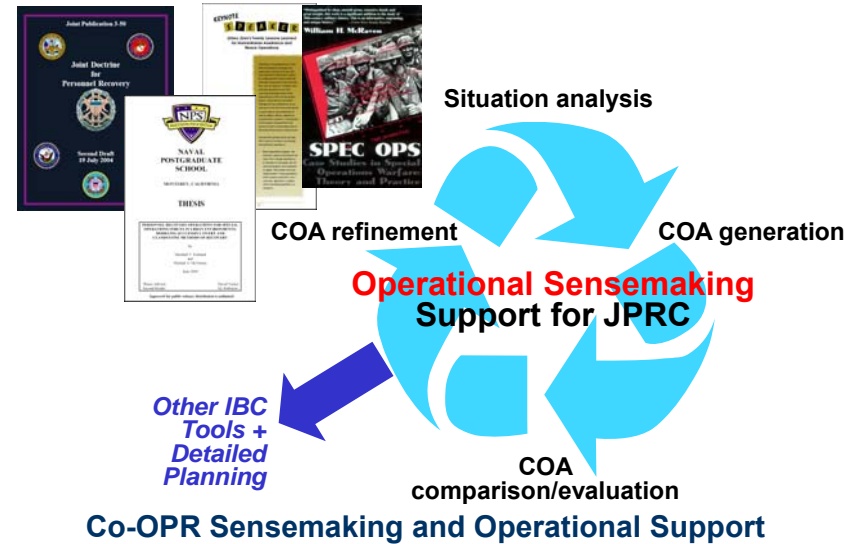
Co-OPR

Collaborative Operations for Personnel Recovery



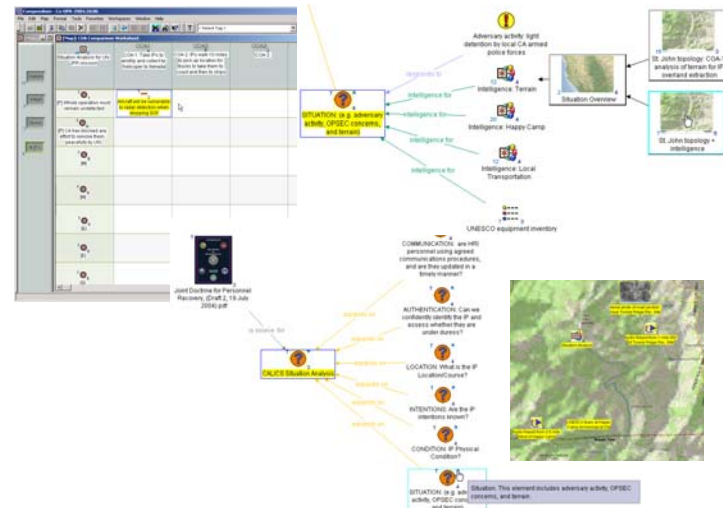
Compendium:

- Provide representational support in the form of linked, interactive COA wargame analysis and comparison worksheets based on the worksheets currently used
- Bring to bear JPR doctrinal issue templates for consideration, and capture discussions and decision rationale as dialogue maps
- Integrate input from wider Coalition Task Force members (e.g. PMESII analysts critiquing COA worksheets)
- Share data in the form of interactive visualization (in the form of Compendium “maps”) published to the local web server
- All of the above are interlinked within Compendium, creating a coalition memory resource



I-X/I-Plan:

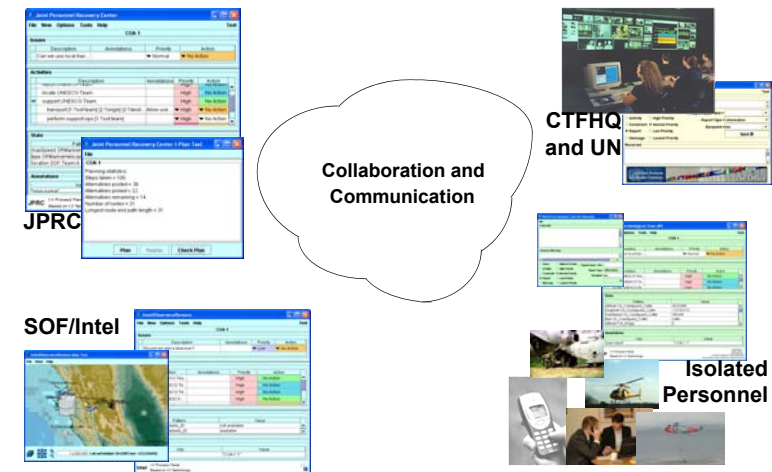
- Uses SOP knowledge base if available, but can provide status of issue, activities, constraints and reporting even with partial or little knowledge
- Works with informal messaging and/or policy-managed communications simultaneously
- Ability to deal with multiple options (COAs)
- Support for initial COA elaboration
- Support for issue handling and problem fixes at plan time in COAs
- Support for plan repair in the face of plan execution failures
- Share plans in simple text form published to the local web server



Compendium Collaborative Sensemaking

Co-OPR Tools:

- Compendium supports working in known situations with semiformal templates, but in unforeseen situations still offers argument mapping and hypermedia linking
- I-X supports working with processes and plans when information needs overlap with more structured SOP knowledge
- Compendium and I-X are both *Issue-based*
 - Compendium can pass I-X issues for formal analysis (e.g. what are the available methods of transport under these conditions?)
 - I-X can pass back candidate options and fixes for inclusion in Compendium issue maps after validating them against the constraints of the problem
- We are interested to assess their interplay in the unfolding scenario...
- We envisage their delivery to productive use via a Personnel Recovery (Experimental) Starter Pack



I-X/I-Plan Collaborative Operations Support

